



ABOUT US

Quality and Safety are our core commitments.

Our cumulated experience since 1996 contribute to a clear target: **to maintain your assets at the highest level of integrity and safety.**



open **R**

INSPECTIONS

SUPPORT

MONITORING

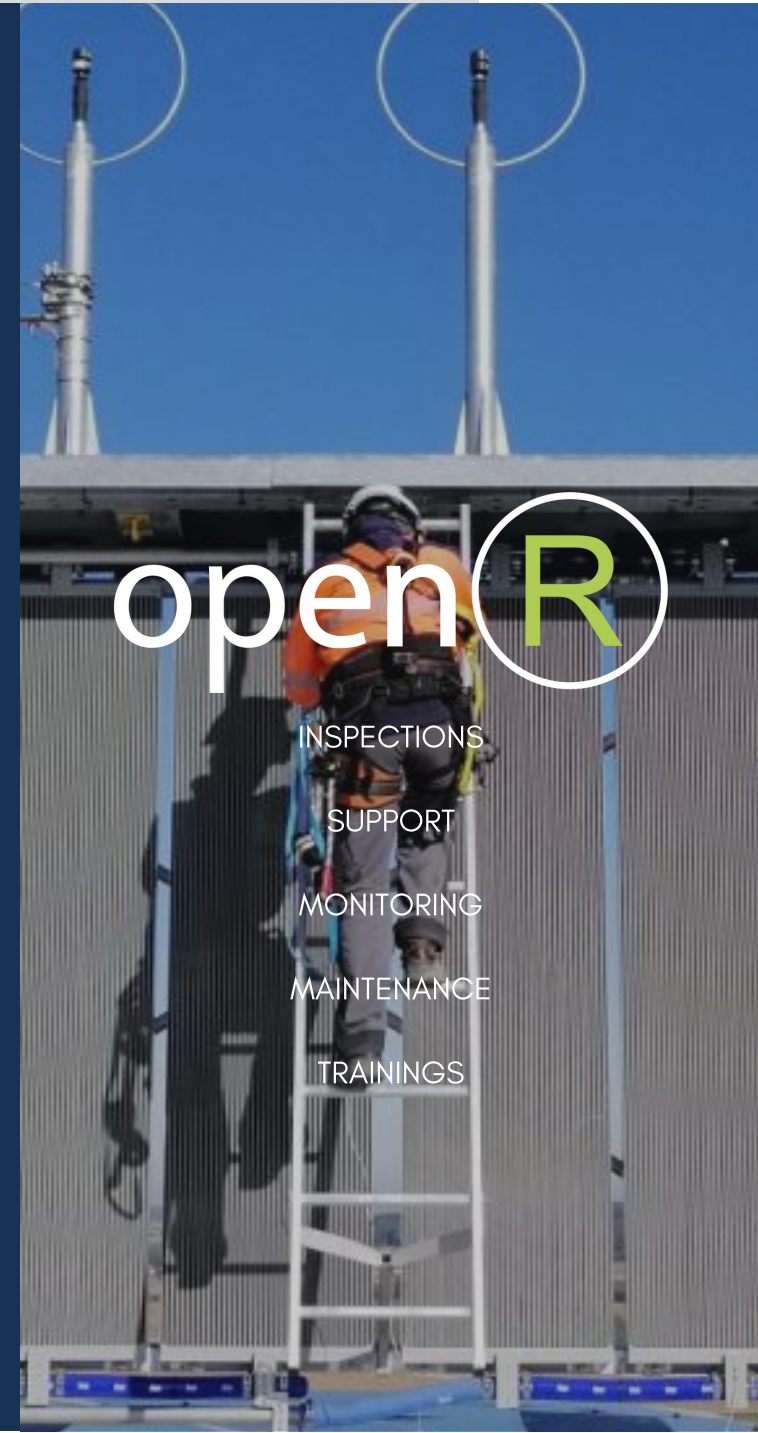
MAINTENANCE

TRAININGS

+33 (0)3.20.47.99.76

CONTACT@OPENR.FR

WWW.OPENR.FR



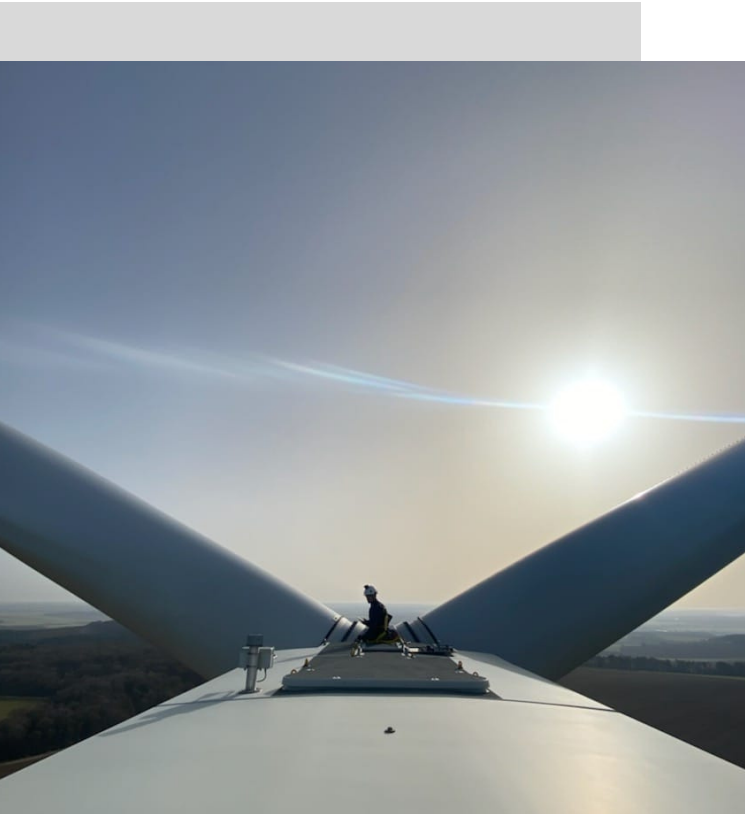
OUR EXPERTISE

OpenR is a **service provider of the wind industry**.

Our engineers will inspect your installations, support your experts and supervise your works **worldwide**.

Based on **a strong QSE organization**, we are delivering **technical inspections** and **regulatory checks**. Our teams are trained in accordance with GWO and BZEE references. They are the flag of our company and **are able to operate most of all the turbines models**.

Our flexibility is to provide the necessary **support for the operation and maintenance** which increase the global efficiency of your assets.



OUR SERVICES

Mandatory checks: cranes, lifts, anchor points

Inspections: visual, ultrasonic survey of MV and HV installations, vibrations, lidar management, blade inspection...

Supports: assistance, QSE back offices

Management: installation and commissioning, main components replacements, dismantling

Maintenance: fire extinction, installation and maintenance of sensorics

Trainings: "Working at Height" trainings on platforms or wind turbines throughout France, BZEE/GWO trainers doing courses for GWO certified training centers.

LOUIS DREYFUS ARMATEURS

OpenR has joined the Louis Dreyfus Armateurs Group (LDA) in 2019.

LDA offers a large scope of services for onshore and offshore assets:

- Assessments for Onshore and Offshore wind farms
- Cable laying for Offshore wind farms
- Maintenance support on Offshore wind farms



www.lda.fr